

1.0 SCOPE

This specification documents the detailed requirements for Analog Devices space qualified die including die qualification as described for Class K in MIL-PRF-38534, Appendix C, Table C-II except as modified herein.

The manufacturing flow described in the STANDARD DIE PRODUCTS PROGRAM brochure at http://www.analog.com/marketSolutions/militaryAerospace/pdf/Die_Broc.pdf is to be considered a part of this specification.

This data sheet specifically details the space grade version of this product. A more detailed operational description and a complete data sheet for commercial product grades can be found at www.analog.com/OP470

2.0 Part Number. The complete part number(s) of this specification follow:

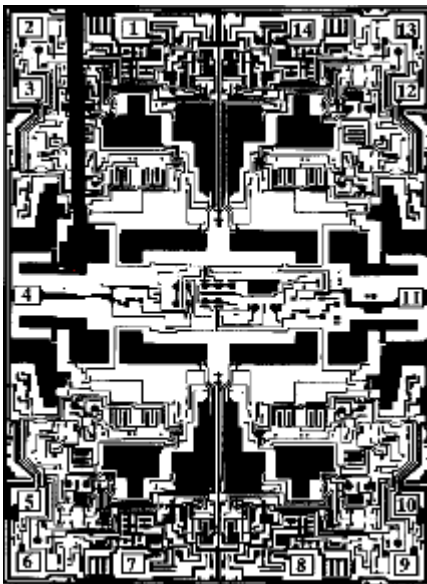
Part Number	Description
OP470-000C	Very Low-Noise Quad Operational Amplifier
OP470R000C	Radiation Tested Very Low-Noise Quad Operational Amplifier

3.0 Die Information

3.1 Die Dimensions

Die Size	Die Thickness	Bond Pad Metalization
106 mil x 163 mil	19 mil \pm 2 mil	Al/Cu

3.2 Die Picture



1. OUT A
2. -IN A
3. +IN A
4. +V_{CC}
5. +IN B
6. -IN B
7. OUT B
8. OUT C
9. -IN C
10. +IN C
11. -V_{CC}
12. +IN D
13. -IN D

ASD0012819

Rev. H

Information furnished by Analog Devices is believed to be accurate and reliable. However, no responsibility is assumed by Analog Devices for its use, nor for any infringements of patents or other rights of third parties that may result from its use. Specifications subject to change without notice. No license is granted by implication or otherwise under any patent or patent rights of Analog Devices. Trademarks and registered trademarks are the property of their respective companies.

One Technology Way, P.O. Box 9106, Norwood, MA 02062-9106, U.S.A.
Tel: 781.329.4700 www.analog.com
Fax: 781.326.8703 © 2011 Analog Devices, Inc. All rights reserved.

3.3 Absolute Maximum Ratings ^{1/}

Supply Voltage (V_{CC})	$\pm 18V$ dc
Differential Input Voltage ^{2/}	$\pm 1V$ dc
Differential Input Current ^{2/}	$\pm 25mA$
Input Voltage	Supply Voltage
Output Short Circuit Duration	Continuous
Storage Temperature Range	$-65^{\circ}C$ to $+150^{\circ}C$
Ambient Operating Temperature Range	$-55^{\circ}C$ to $+125^{\circ}C$
Junction Temperature (T_J).....	$+150^{\circ}C$

Absolute Maximum Ratings Notes:

- ^{1/} Stresses above the absolute maximum rating may cause permanent damage to the device. Extended operation at the maximum levels may degrade performance and affect reliability.
- ^{2/} The inputs are protected by back-to-back diodes. Current limiting resistors are not used in order to achieve low noise performance. If the differential input voltage exceeds $\pm 1V$, the input current should be limited to $\pm 25mA$.

4.0 Die Qualification

In accordance with class-K version of MIL-PRF-38534, Appendix C, Table C-II, except as modified herein.

- (a) Qual Sample Size and Qual Acceptance Criteria – 10/0
- (b) Qual Sample Package – DIP
- (c) Pre-screen electrical test over temperature performed post-assembly prior to die qualification.

Table I - Dice Electrical Characteristics

Parameter	Symbol	Conditions ^{1/}	Limit Min	Limit Max	Units
Input Offset Voltage	V_{IO}			± 0.4	mV
Input Offset Current	I_{IO}	$V_{CM} = 0V$		± 10	nA
Input Bias Current	I_{IB}	$V_{CM} = 0V$		± 25	nA
Large-Signal Voltage Gain	A_{VS}	$V_O = \pm 10V, R_L = 10k\Omega$	1000		V/mV
		$V_O = \pm 10V, R_L = 2k\Omega$	500		
Output Voltage Swing	V_{OP}	$R_L = 2k\Omega$	± 12		V
Supply Current ^{2/}	I_S	No Load		11	mA
Input Voltage Range	IVR		± 11		V
Common-Mode Rejection	CMR	$V_{CM} = IVR$	110		dB
Power Supply Rejection Ratio	PSRR	$V_{CC} = \pm 4.5V$ to $\pm 18V$		1.8	$\mu V/V$

Table I Notes:

- ^{1/} $V_{CC} = \pm 15V$, $R_S = 50\Omega$, and $T_A = +25^{\circ}C$, unless otherwise specified.
- ^{2/} I_S limit equals the total of all amplifiers.

Table II - Electrical Characteristics for Qual Samples						
Parameter	Symbol	Conditions 1/	Sub-groups	Limit Min	Limit Max	Units
Input Offset Voltage	V_{IO}		1		± 0.4	mV
			2, 3		± 0.6	
			M, D, L, R 3/	1	± 0.6	
Input Offset Current	I_{IO}	$V_{CM} = 0V$	1		± 10	nA
			2, 3		± 20	
			M, D, L, R 3/	1	± 50	
Input Bias Current	I_{IB}	$V_{CM} = 0V$	1		± 25	nA
			2, 3		± 50	
			M, D, L, R 3/	1	± 500	
Large-Signal Voltage Gain	A_{VS}	$V_O = \pm 10V, R_L = 10k\Omega$	4	1000		V/mV
			5, 6	750		
			M, D, L, R 3/	4	100	
		$V_O = \pm 10V, R_L = 2k\Omega$	4	500		
			5, 6	400		
Output Voltage Swing 4/	V_{OP}	$R_L = 2k\Omega$	4, 5, 6	± 12		V
Supply Current 2/	I_S	No Load	1, 2, 3		11	mA
			M, D, L, R 3/	1		
Slew Rate 4/	SR	$A_{VCL} = \pm 21, R_L = 10k\Omega$	7	1.4		V/ μs
Input Voltage Range 4/	IVR		1, 2, 3	± 11		V
Common-Mode Rejection 4/	CMR	$V_{CM} = IVR$	1	110		dB
			2, 3	100		
Power Supply Rejection Ratio 4/	PSRR	$V_{CC} = \pm 4.5V \text{ to } \pm 18V$	1		1.8	$\mu V/V$
			2, 3		5.6	

Table II Notes:

- 1/ $V_{CC} = \pm 15V, R_S = 50\Omega$, unless otherwise specified.
- 2/ I_S limit equals the total for all amplifiers.
- 3/ Devices tested at 100Krad irradiation.
- 4/ Parameter not tested post irradiation.

Table III - Life Test Endpoint and Delta Parameter (Product is tested in accordance with Table II with the following exceptions)								
Parameter	Symbol	Sub-groups	Post Burn In Limit		Post Life Test Limit		Life Test Delta	Units
			Min	Max	Min	Max		
Input Offset Voltage	V_{IO}	1		±0.4		±0.5	0.1	mV
		2, 3		±0.6		±0.8		
Input Bias Current	I_{IB}	1		±25		±30	5	nA
		2, 3		±50		±60		
Input Offset Current	I_{IO}	1		±10		±20		nA
		2, 3		±20		±40		

5.0 Life Test/Burn-In Information

- 5.1 HTRB is not applicable for this drawing.
- 5.2 Burn-in is per MIL-STD-883 Method 1015 test condition B or C.
- 5.3 Steady state life test is per MIL-STD-883 Method 1005.

Rev	Description of Change	Date
A	Initiate	20-DEC-01
B	Update web address. Add radiation part number and limits.	17-APR-03
C	Corrected Die Pad Numbering	11-Apr-07
D	Update 1.0 Scope description.	8-Aug-07
E	Update header/footer & add to 1.0 Scope description.	Mar. 3, 2008
F	Add Junction Temperature (T) _j ...+150°C to 3.3 Absolute Maximum Ratings	April 3, 2008
G	Updated Section 4.0c note to indicate pre-screen temp testing being performed	6-JUN-2009
H	Updated fonts and sizes to ADI standards	3-Oct-2011